

Keep this  
manual onboard!



# User Manual

*For Retract Thruster Models*  
**SRHP Hydraulic**



**DOCUMENT ID: 6742**

**REVISION: 4**

**DATE: 2025**

**LANGUAGE: EN**

**U  
M**

## Contents

### User Manual

General Operation Consideration and Precaution Guidelines .....	3
User operation .....	4
Proportional control .....	4
Proportional control panel.....	5
Maintenance .....	6
Basic troubleshooting .....	8
Advanced troubleshooting .....	8
Seasonal checklist.....	9
Sleipner group waste disposal and recycling guide.....	10
<b>Service and Support.....</b>	<b>11</b>
<b>Product Spare Parts and Additional Resources.....</b>	<b>11</b>
<b>Warranty Statement.....</b>	<b>11</b>



#### WARNING

Failure to follow any considerations and precautions can lead to serious personal injury, death and/or damage your product.  
Failure to follow any considerations and precautions will render all warranties given by Sleipner Motor as VOID.

MC\_0411

## General Operation Consideration and Precaution Guidelines

MC\_0444

### For the operation of Sleipner thrusters systems:

MC\_0418

- When not in use or when leaving the boat, turn the control device off.
- When leaving the boat, always turn off the main power switch for the thruster.
- Never run the thruster while out of water.
- Stop running the thruster and turn it off if the thruster stops giving thrust while running. Running the thruster for more than a few seconds without resistance from the propeller can cause severe damage to the thruster drive components.
- The thruster will not run if two conflicting directions are input in two control panels simultaneously.
- If you notice any faults with the thruster, switch it off to avoid further damage.
- The purpose of the thruster is to manoeuvre or dock the vessel. Forward or reverse speed must not exceed 4 knots when operated.



#### WARNING

Never use thrusters close to objects, persons, or animals in the water. The thruster will draw objects into the tunnel, as well as the rotating propellers. Contact with the rotating propellers will cause severe injuries and damage to the thruster.

Turn off the main power switch before touching any part of the thruster. An incidental start while touching moving parts can cause serious injuries.

Always plan on how to avoid damage to persons or other objects if the thruster stops giving thrust for while manoeuvring.

### For the operation of hydraulic motor thrusters

MC\_0421

- If the performance of the thruster is reduced check the hydraulic system or check the tunnel for marine growth.



#### WARNING

Accidental activation of the retract mechanism can cause serious injury due to the high-pressure force used for closing the hatch. IF operating the hatch during any work/ maintenance around or inside the retract hatch, USE CAUTION.



MC\_0627

! Please refer to the graphic for special considerations relating to your model !

The following is an operation guide to ALL Sleipner control products. Ensure to familiarise yourself with the functionality and operation of your specific control device.



## WARNING

Take time to practice operation in open water to become familiar with the thruster and to avoid damages to your boat or people.

## General operation

1. Turn on the main power switch for the bow thruster. **(NB: Always turn off the main power switch when not on-board.)**

2. Turn on the control panel by pushing the/ both "ON" button(s) on the original Sleipner panel simultaneously.

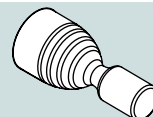
Turn off the control panel by pushing the "OFF" button

3. To turn the bow/ stern in the desired direction:



### Button control panels

For button control, push the button in the corresponding direction you wish the bow/ stern to move.



### Joystick control panels

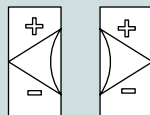
For joystick control, move the joystick in the direction you wish the bow/ stern to move.

**(NB: If equipped for proportional control move the joystick equivalent to the amount of thrust you intend to receive.)**

For other controls like foot switches or toggle-switches please refer to that products user manual for detailed operational use.

## Hold functionality

If equipped with 'hold' functionality push the button in the corresponding direction you wish the thrusters to engage a holding pattern:



### Hold Button

+ or -

Will increase or decrease the holding force output of the thrusters

## Operating a combined bow and stern thruster

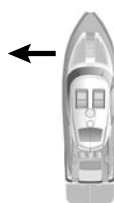
The combination of a bow and stern thruster offers total manoeuvrability to move the bow and the stern separately from each other or in unison. This enables the boat to move sideways in both directions or turn the boat around a 360° axis while staying stationary.

## Remote controls



## CAUTION

The remote control design reflects the vessel for orientation guidance. Be aware of the remote control orientation during operation.



Remote control orientated with the vessel

## Drift

Depending on the sideways speed of the bow/ stern, you must disengage the control device shortly before the vessel is in the desired position.

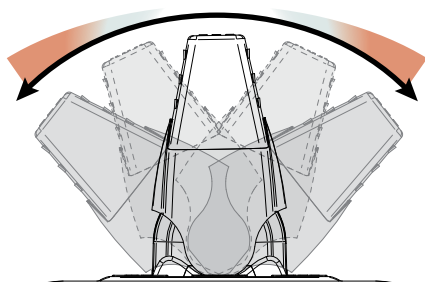
**(NB: Be aware the boat will continue to move after disengaging the thruster control.)**



## CAUTION

At any significant cruising speed (+1-2 kn) the side thruster will have little effect to steer the vessel.

## Proportional Control



Variable thrust power for proportional thrusters is dependent on the extent of the joystick/ throttle.

For minimal thrust slightly move the joystick/ throttle in one direction.

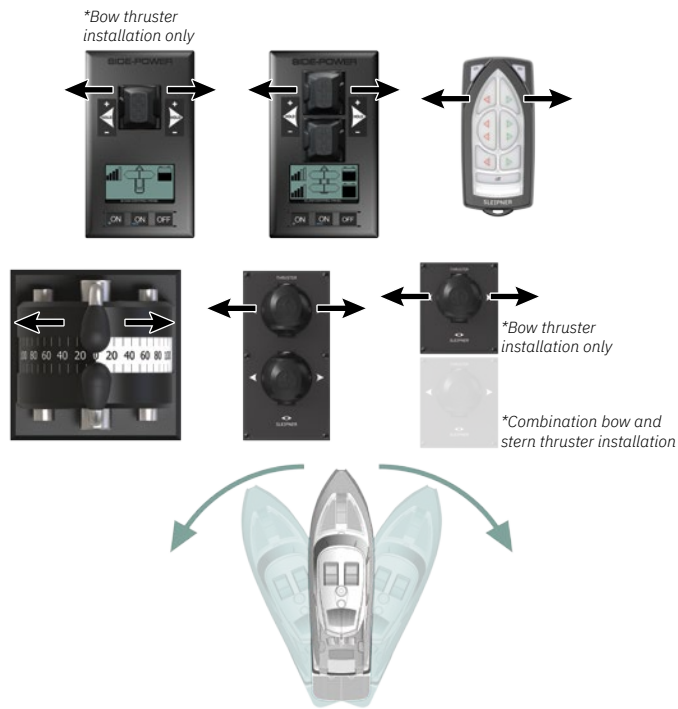
For maximum thrust move the joystick/ throttle to its end point.

## Proportional Control Panel

### Activating the bow thruster

Using your control device/ panel press the button or move the joystick in the direction you intend to turn the boat. Ensure to use the control device/ panel designated for the bow thruster.

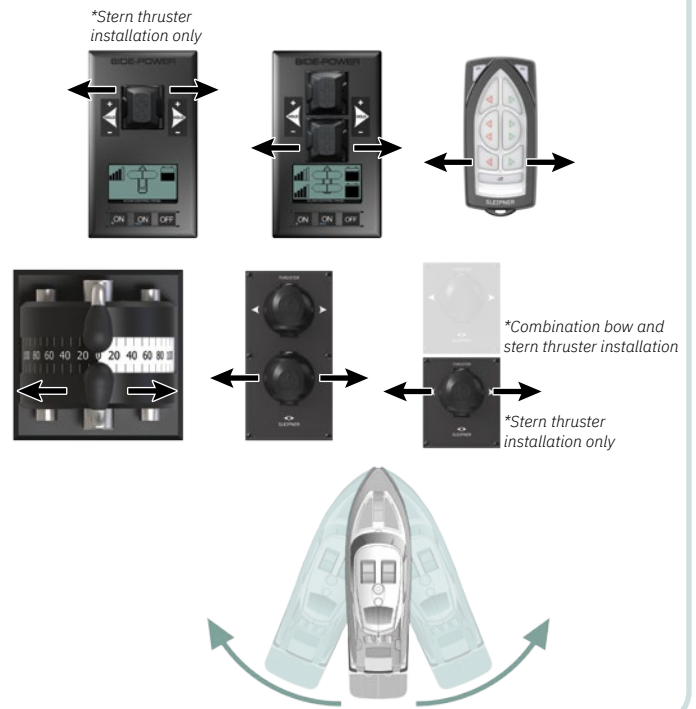
\*Control panel example



### Activating the stern thruster

Using your control device/ panel press the button or move the joystick in the direction you intend to turn the boat. Ensure to use the control device/ panel designated for the stern thruster.

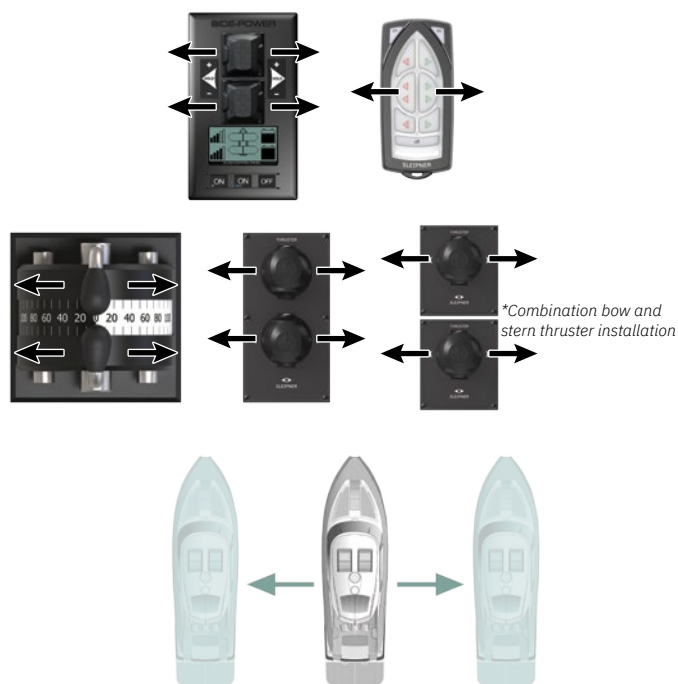
\*Control panel example



### Activating full sideways maneuverer

Using your control device/ panel press both buttons or move the joysticks in the same direction you intend to move the boat. Requires both a bow and stern thruster to perform.

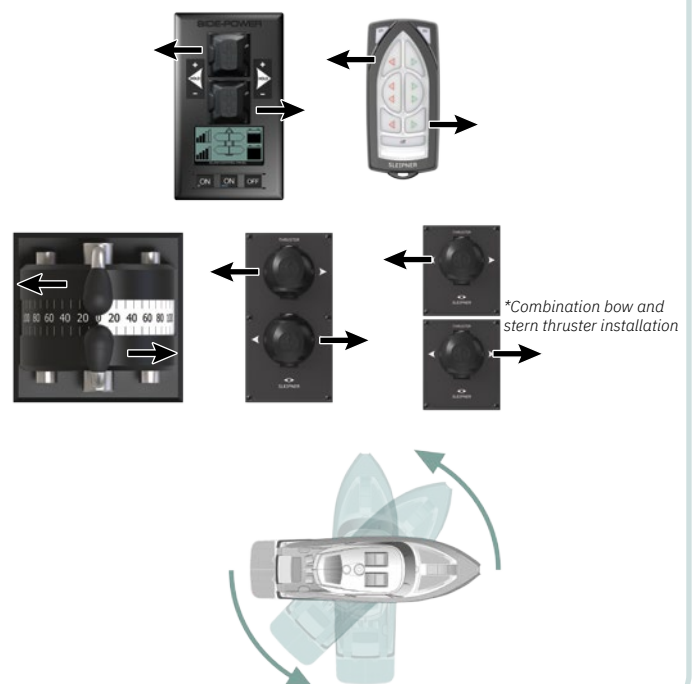
\*Control panel example



### Activating stationary spin to rotate the boat on its axis

Using your control device/ panel press both buttons or move the joysticks in opposing directions. Requires both a bow and stern thruster to perform.

\*Control panel example



For additional information on your control panel or device refer to your control devices user manual

MG\_0394

**! Please refer to the graphic for special considerations relating to your model !**

**As a part of the seasonal service of your Thruster before every season, always check that:**

**In Water**

- The area around the thruster inside the boat is clean and dry. Ensure there are no signs of water/oil leaks.
- All electrical connections are clean and fastened firmly.

**Out of Water**

- Check the propeller(s) or tunnel for any damage for example impact damage.
- The propeller(s) is fastened securely to the gear leg.
- Check all components of thruster are fastened securely.
- Clean the tunnel and gear leg from marine growth.
- Paint the propeller and gear leg with anti-fouling before every season to keep it clean from sea growth. **(NB: Never paint the anode, sealing or propeller shaft. Ensure paint does not enter the space between the propeller and the gear leg.)**
- Change the anode before every season, or when half the anode has eroded. Always use a sealant or thread glue on the holding screw to ensure that it does not fall off.
- (IF) your product uses an external oil tank, ensure the oil level remains the same.
- (IF) using an Ignition Protected thruster and there is a problem with your motor, please contact your dealer.

## SR(V,L) Maintenance

DO NOT apply anti-fouling  
DO NOT clean with chemicals,  
hot water or high-pressure water  
jet in this area.

Check and re-lubricate  
with waterproof grease  
if necessary

Check annually rubber  
element and replace every  
2nd year.

**(NB: SR300 does not have  
a rubber element)**

Retract  
mechanism  
anode

Gear leg anode  
(Both sides)

Tunnel anode  
(Both sides)

Twist rings

IF over 3 mm movement,  
Break-away rings must be  
replaced

Check these areas for leaks

MG\_0100

Before seeking assistance from the website help desk from your Sleipner dealer/distributor, please perform these tests.

**(NB: If you are unable to understand what to check, you must consult a Sleipner distributor.)**

CHECK	SOLUTION
<b>The motor runs, but there is no thrust</b>	
Check that the propellers are fitted and fastened correctly and that there is no damage on the propeller shaft.	Re-fasten or replace if necessary
On counter rotating models ensure LH and RH propellers are installed correctly	Install correctly
Check that the flexible coupling between the motor and drive shaft is fitted correctly and not damaged.	Replace if necessary
Check that the gears are not damaged.	Replace if necessary
<b>The thrusters performance is reduced</b>	
Check that the propeller, gear house and tunnel are free from growth/ barnacles or debris and damage.	If there is growth in the tunnel, this will disturb/ block the water flow and significantly reduce performance
Check oil pressure and levels.	Fill if necessary

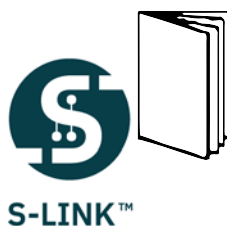
## Advanced Control Panel Troubleshooting

MC\_0352

*Control panels operating on the S-link system display all faults via the control panel interface or via other warning methods.*

*To review any issues of your product refer to the appropriate user manual for a complete list of fault codes and troubleshooting guides.*

**For additional supporting documentation, we advise you to visit our website [www.sleipnergrou.com](http://www.sleipnergrou.com)**





CHECK TO PERFORM	DATE											
The thruster components are fastened securely.												
The area around the thruster is clean and dry. If there are signs of water or oil leaks, find the source and eliminate it												
Apply anti fouling on the the propeller and gear leg inside the thruster housing												
All electrical connections are clean and fastened firmly.												
Change the anode.												
Check oil in the oil reservoir.												

**Introduction:**

At Sleipner Group, we prioritize sustainability and encourage the repair and re-manufacturing of products to extend their life cycles. If disposal is necessary, please follow these guidelines to recycle and manage waste responsibly, ensuring our efforts align with environmental protection efforts.

**Electric Motors and Electronics:**

- Disconnect from any power sources and dismantle them carefully.
- Recycle components through certified e-waste recycling centers that can adequately handle and recover electronic materials.
- Dispose of any non-recyclable electronic parts according to local environmental regulations.

**Metals:**

- Collect and sort metal parts for recycling as scrap metal.
- To increase recycling efficiency, ensure that metals are clean and free from non-metal attachments.

**Plastics:**

- Identify recyclable plastics based on local recycling guidelines.
- Remove any non-plastic components and clean them before recycling to improve the quality of the recycled material.

**Hazardous Materials:**

- Correctly identify any hazardous substances within components, such as batteries or capacitors etc.
- Follow local regulations for the safe disposal of hazardous materials to prevent pollution and protect environmental health.

**General Disposal Instructions:**

- Consult local recycling programs to determine the acceptability of various materials.
- Use authorized disposal services to ensure compliance with environmental standards.

**Safe Disposal Practices:**

- Adhere to local laws and regulations for waste management to minimize environmental impact and ensure community safety.

This guide is designed to help reduce our products' environmental footprint through responsible end-of-life management. Please contact your local waste management supplier or our support team for more specific disposal information or further assistance.

**Find your local professional dealer from our certified worldwide network for expert service and support. visit our website [www.sleipnergroup.com/support](http://www.sleipnergroup.com/support)**

## Product spare parts and additional resources

**For additional supporting documentation, we advise you to visit our website [www.sleipnergroup.com](http://www.sleipnergroup.com) and find your Sleipner product.**

## Warranty statement

1. Sleipner Motor AS (The “Warrantor”) warrants that the equipment (parts, materials, and embedded software of products) manufactured by the Warrantor is free from defects in workmanship and materials for purpose for which the equipment is intended and under normal use and maintenance service (the “Warranty”).
2. This Warranty is in effect for two years (Leisure Use) or one year (Commercial and other Non-leisure Use) from the date of delivery/purchase by the end user, with the following exceptions:
  - (a) For demonstration vessels, or vessels kept on the water, the dealer is considered as the end user from 6 months after their launch of the vessel;
  - (b) The warranty period starts no later than 18 months after the first launch of the vessel.
 Please note that the boat manufacturer and dealer must pay particular attention to correct maintenance and service both by the products manuals as well as general good practice for the location the boat is kept in the period the boat is in their care. In cases where the 6 and 18 months grace periods for boat builders and dealers are passed, it is possible to obtain a full warranty upon inspection and approval of the warrantor or such representative.
3. Certain parts, classified as wearable or service parts, are not covered by the warranty. A failure to follow the required maintenance and service work as described in the product manual render all warranty on parts or components directly or indirectly affected by this void. Please also note that for some parts, time is also a factor separately from actual operational hours.
4. This Warranty is transferable and covers the equipment for the specified warranty period.
5. The warranty does not apply to defects or damages caused by faulty installation or hook-up, abuse or misuse of the equipment including exposure to excessive heat, salt or fresh water spray, or water immersion except for equipment specifically designed as waterproof.
6. In case the equipment seems to be defective, the warranty holder (the “Claimant”) must do the following to make a claim:
  - (a) Contact the dealer or service centre where the equipment was purchased and make the claim. Alternatively, the Claimant can make the claim to a dealer or service centre found at [www.sleipnergroup.com](http://www.sleipnergroup.com). The Claimant must present a detailed written statement of the nature and circumstances of the defect, to the best of the Claimant’s knowledge, including product identification and serial nbr., the date and place of purchase and the name and address of the installer. Proof of purchase date should be included with the claim, to verify that the warranty period has not expired;
  - (b) Make the equipment available for troubleshooting and repair, with direct and workable access, including dismantling of furnishings or similar, if any, either at the premises of the Warrantor or an authorised service representative approved by the Warrantor. Equipment can only be returned to the Warrantor or an authorised service representative for repair following a pre-approval by the Warrantor’s Help Desk and if so, with the Return Authorisation Number visible postage/shipping prepaid and at the expense of the Claimant.
7. Examination and handling of the warranty claim:
  - (a) If upon the Warrantor’s or authorised service Representative’s examination, the defect is determined to result from defective material or workmanship in the warranty period, the equipment will be repaired or replaced at the Warrantor’s option without charge, and returned to the Purchaser at the Warrantor’s expense. If, on the other hand, the claim is determined to result from circumstances such as described in section 4 above or a result of wear and tear exceeding that for which the equipment is intended (e.g. commercial use of equipment intended for leisure use), the costs for the troubleshooting and repair shall be borne by the Claimant;
  - (b) No refund of the purchase price will be granted to the Claimant, unless the Warrantor is unable to remedy the defect after having a reasonable number of opportunities to do so. In the event that attempts to remedy the defect have failed, the Claimant may claim a refund of the purchase price, provided that the Claimant submits a statement in writing from a professional boating equipment supplier that the installation instructions of the Installation and Operation Manual have been complied with and that the defect remains.
8. Warranty service shall be performed only by the Warrantor, or an authorised service representative, and any attempt to remedy the defect by anyone else shall render this warranty void.
9. No other warranty is given beyond those described above, implied or otherwise, including any implied warranty of merchantability, fitness for a particular purpose other than the purpose for which the equipment is intended, and any other obligations on the part of the Warrantor or its employees and representatives.
10. There shall be no responsibility or liability whatsoever on the part of the Warrantor or its employees and representatives based on this Warranty for injury to any person or persons, or damage to property, loss of income or profit, or any other incidental, consequential or resulting damage or cost claimed to have been incurred through the use or sale of the equipment, including any possible failure or malfunction of the equipment or damages arising from collision with other vessels or objects.
11. This warranty gives you specific legal rights, and you may also have other rights which vary from country to country.

## Patents

At Sleipner we continually reinvest to develop and offer the latest technology in marine advancements. To see the many unique designs we have patented, visit our website [www.sleipnergroup.com/patents](http://www.sleipnergroup.com/patents)

© **Sleipner Motor AS**, All rights reserved

The information given in the document was right at the time it was published. However, Sleipner Motor AS cannot accept liability for any inaccuracies or omissions it may contain. Continuous product improvement may change the product specifications without notice. Therefore, Sleipner Motor AS cannot accept liability for any possible differences between product and document.

**Learn more about our products at**  
**[www.sleipnergroun.com](http://www.sleipnergroun.com)**



**SLEIPNER MOTOR AS**

P.O. Box 519

N-1612 Fredrikstad

Norway

[www.sleipnergroun.com](http://www.sleipnergroun.com)

Made in Norway